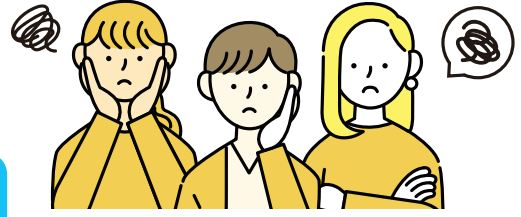


Yamanashi Consultation and Support Center for Foreign Residents



- We offer consultations to foreign residents living in Yamanashi.
- We also offer consultations to companies regarding foreign personnel.
- For visa-related questions, we have an immigration lawyer.
- We offer other free legal consultations as well (with real lawyers).



055-222-3390



y-sodan@yia.or.jp

FREE

Sun	Mon	Tue	Wed	Thu	Fri	Sat
×	×	○	○	○	○	○

9:00AM ~ 5:00 PM



English

中文

Tiếng Việt

Português

Tagalog

한국어

Español

ไทย

नेपाली

Bahasa Indonesia

日本語 ...

Yamanashi International Association
1-2-2 Asake, Kofu, Yamanashi 400-0862
Located inside the Yamanashi International
Center for Multiculturalism and Inclusivity



e-mail



web



Whatsapp

■ You can consult with us on a variety of topics

• General Inquiries:

Residence status (visa), jobs, healthcare, marriage/divorce, housing, Japanese lessons, etc.

• Work-Related Inquiries:

Immigration procedures for employing foreign personnel, recruiting, hiring, advice for creating an inclusive work environment, etc.

■ Consultations are available in various languages

English, Chinese, Portuguese, Vietnamese, Tagalog, Korean, Thai, Spanish, Indonesian, Nepali, Japanese, etc.

■ Consultation Hours

Tuesday – Saturday (9am - 5pm)

(Closed on national holidays and from 12/29 to 1/3)

■ Immigration Lawyer Availability

Tuesday – Thursday (9am - 5pm)

(Closed on national holidays and from 12/29 to 1/3)

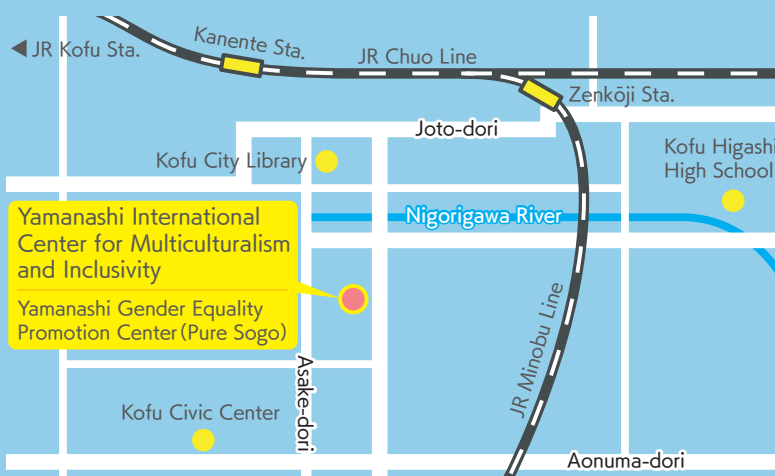
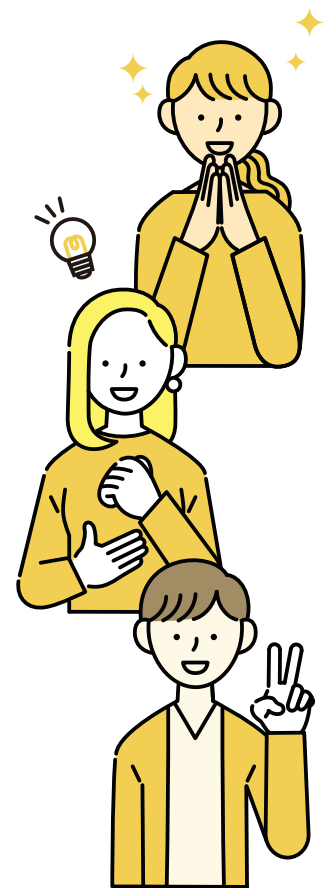
■ Free Legal Consultation for Foreign Residents

Consultations will be conducted by real lawyers.

1st Wednesday of every month, 6:30pm - 9pm

3rd Saturday of every month, 1pm – 4pm

※Appointments are required: 055-222-3390



Yamanashi Consultation and Support Center for Foreign Residents

1-2-2 Asake, Kofu, Yamanashi 400-0862
Located inside the Yamanashi International Center for Multiculturalism and Inclusivity

TEL 055-222-3390
Email y-sodan@yia.or.jp



MAP ▶